

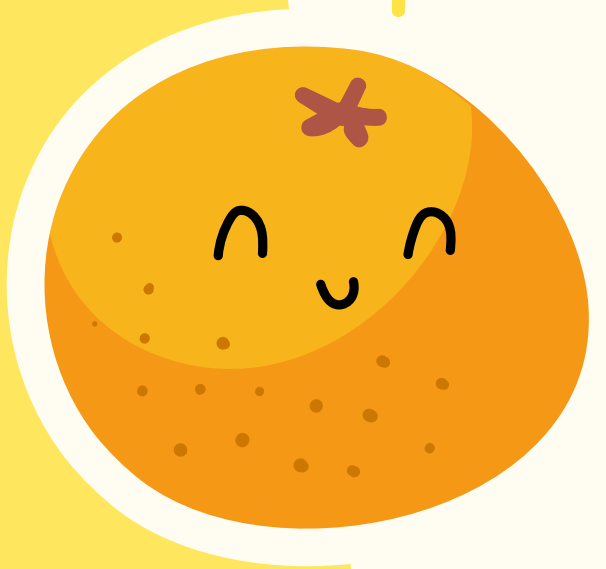
KIDS menu




THOMSONS
KITCHEN & BAR

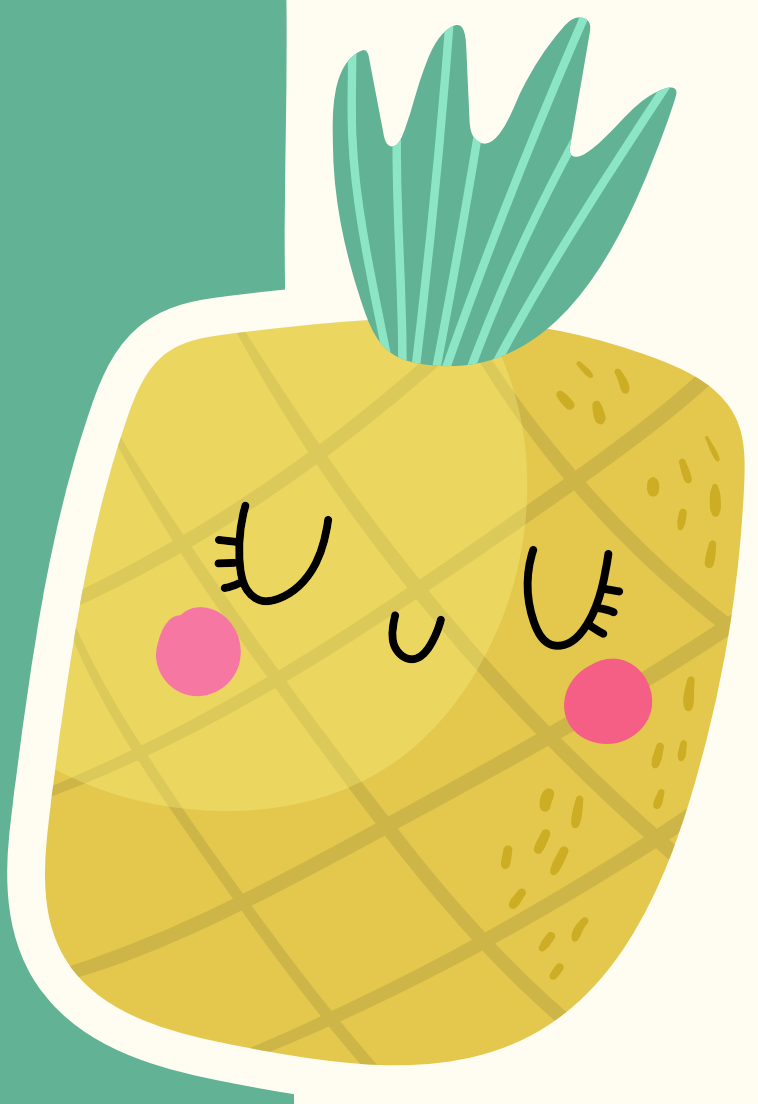
Breakfast

- RISE & SHINE** ^{GF NF} \$8.5
Fried or scrambled egg, choice of bacon or breakfast sausage. fruit cup, toast
- CHEESE OMELET** ^{GF NF} \$8.5
Cheesy omelet, fruit cup
- GRILLED CHEESE SANDWICH** ^{NF V} \$8.5
Cheddar cheese, mozzarella cheese, white bread, fruit cup
- PANCAKE** ^{NF V} \$8
Butter, maple syrup, fruit cup
- WAFFLE** ^{NF V} \$8
Crispy waffle, whipped cream, maple syrup, fruit cup



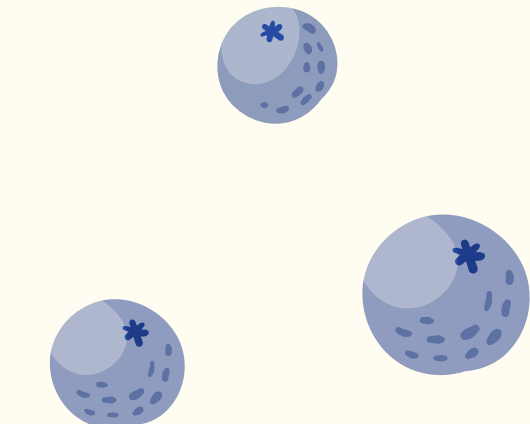
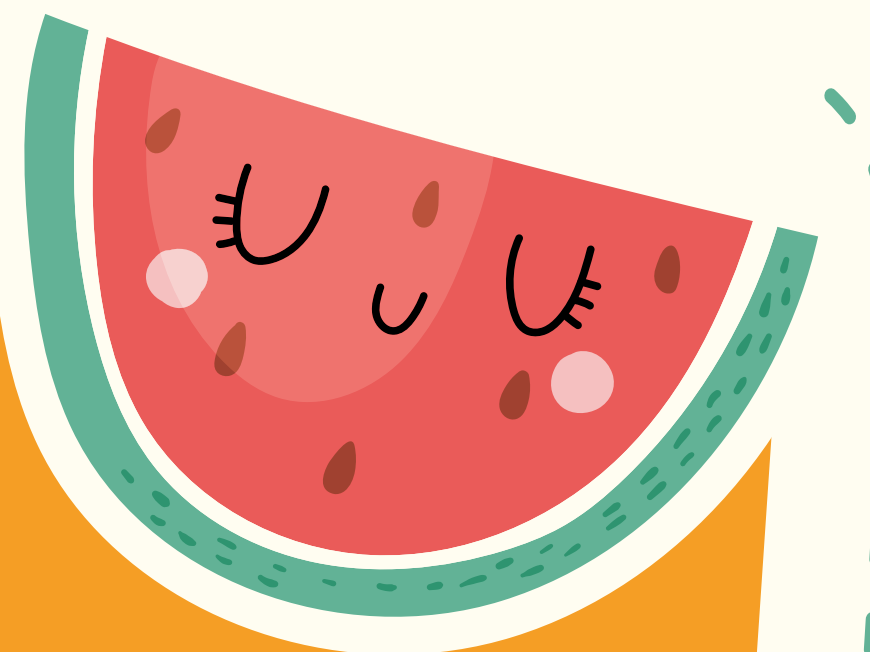
Drinks

- MILK** \$3.5
- CHOCOLATE, SOY, ALMOND OR OAT MILK** \$4
- JUICE** \$4.5
Orange, cranberry, apple, grapefruit, tomato
- FRESH FRUIT SMOOTHIE** \$4.5



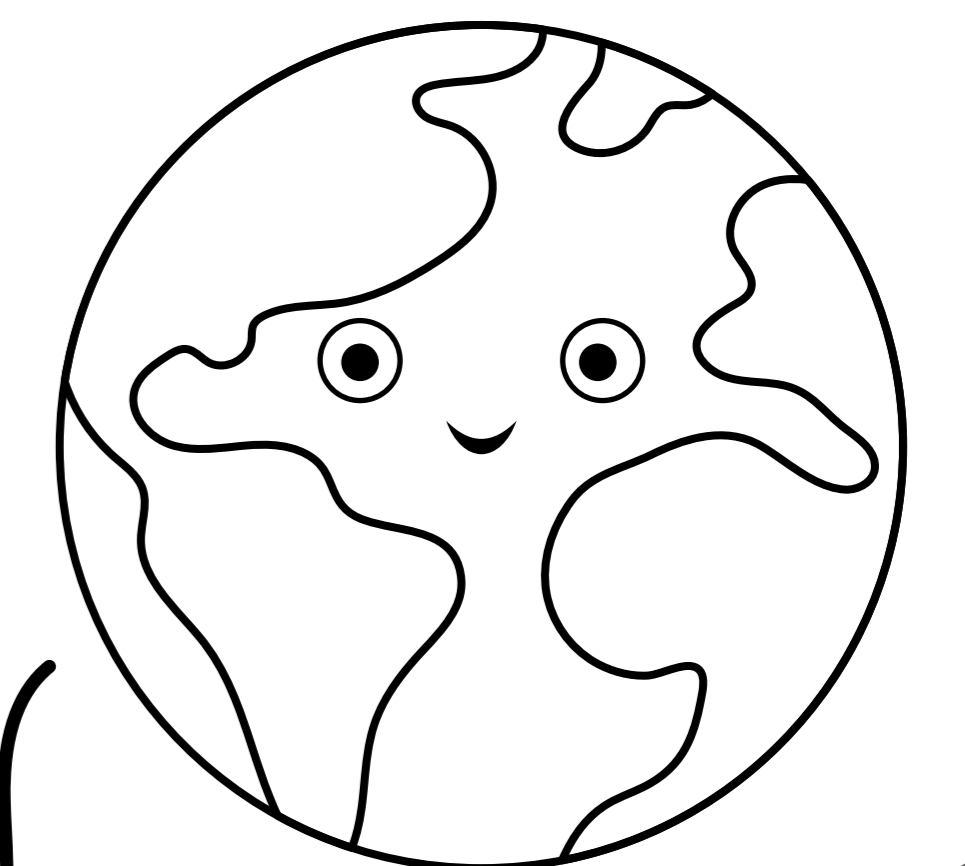
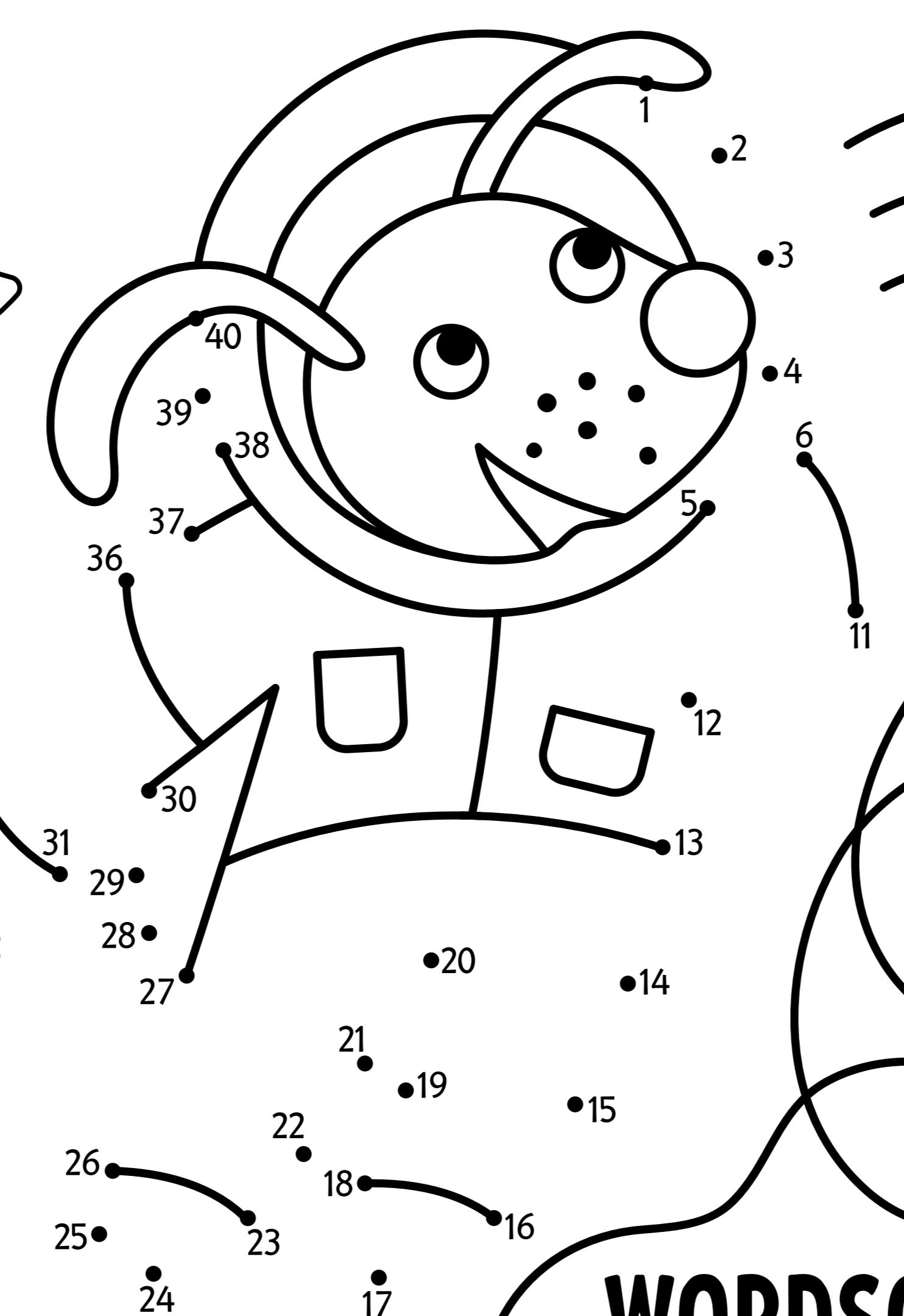
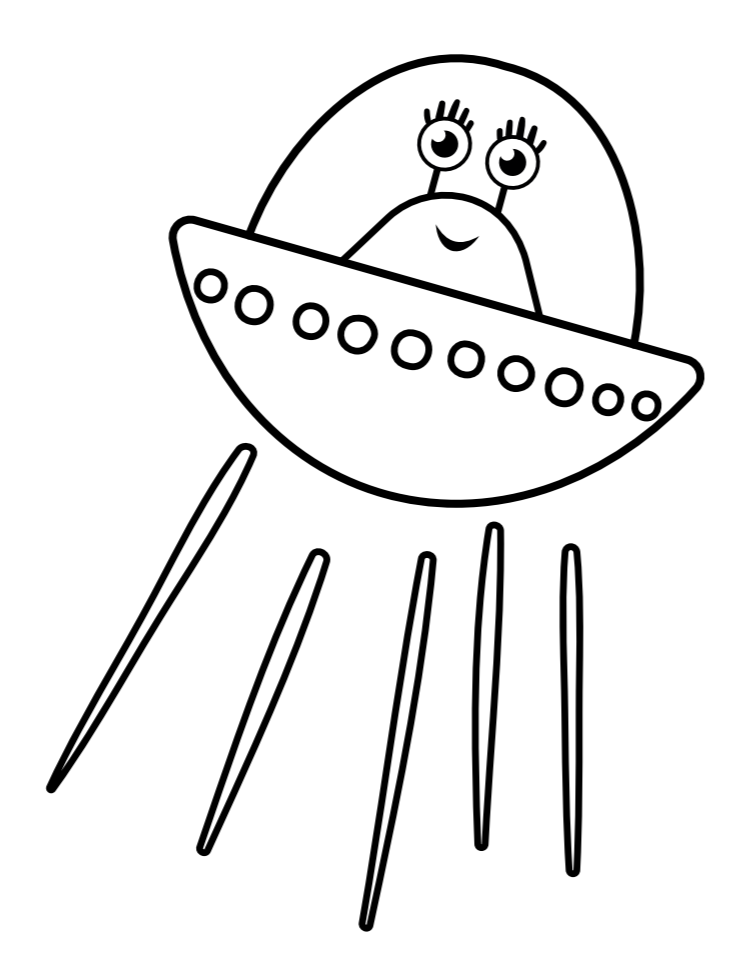
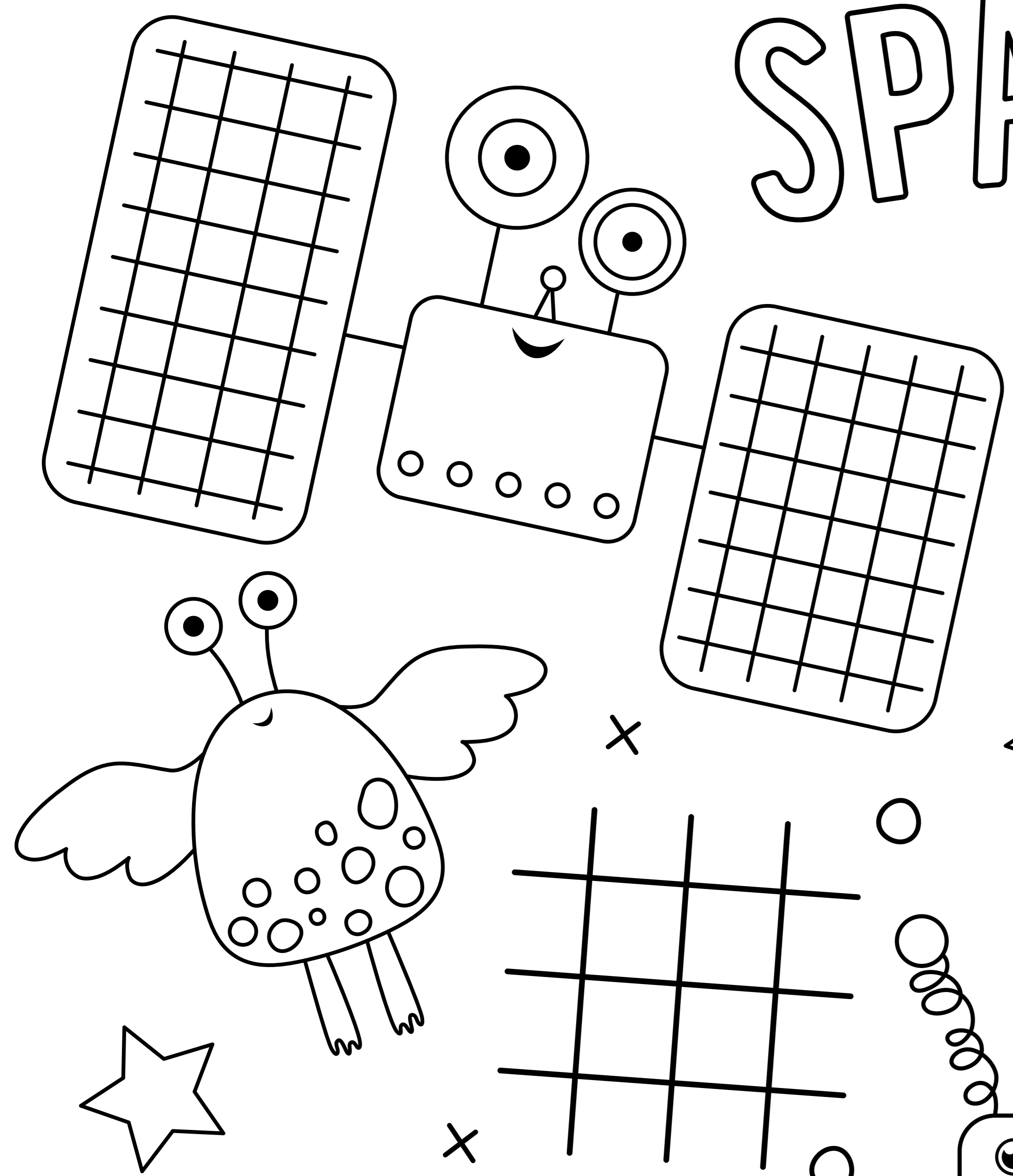
All-Day

- MIXED GREENS** ^{GF NF VG} \$8
Seasonal greens, cherry tomatoes, cucumber, pumpkin seeds, white balsamic vinaigrette
- PASTA** ^{NF} \$10
Butter or tomato sauce, parmesan cheese
- CHICKEN FINGERS & FRIES** ^{GF DF NF} \$12
Breaded crispy chicken fingers, french fries, plum sauce
- CHEESE BURGER** ^{NF} \$11
4 oz Alberta beef patty, cheddar cheese, burger sauce, brioche bun, fries
- FISH & CHIPS** ^{NF} \$12
Sustainable cod fish, fries, lemon-caper sauce



Prices are exclusive of gratuity & tax. Please notify your server if you have food allergies or dietary restrictions. Consuming raw undercooked meats, poultry, seafood, shellfish or eggs may increase your risk of foodborne illness.

SPACE ACTIVITY MAT



I spy
FIND 5
ALIENS

WHICH WAY
LEADS TO
THE EARTH?

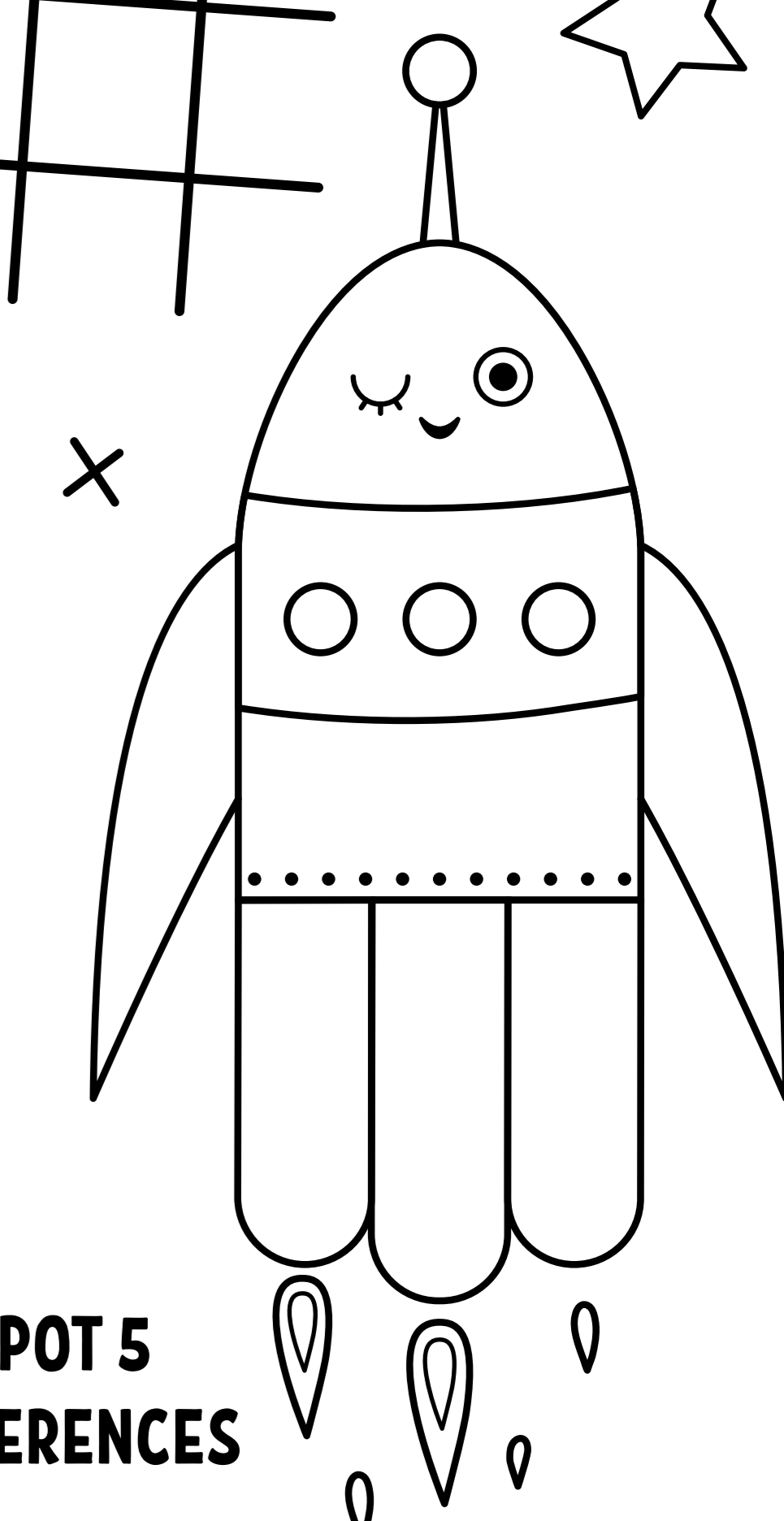
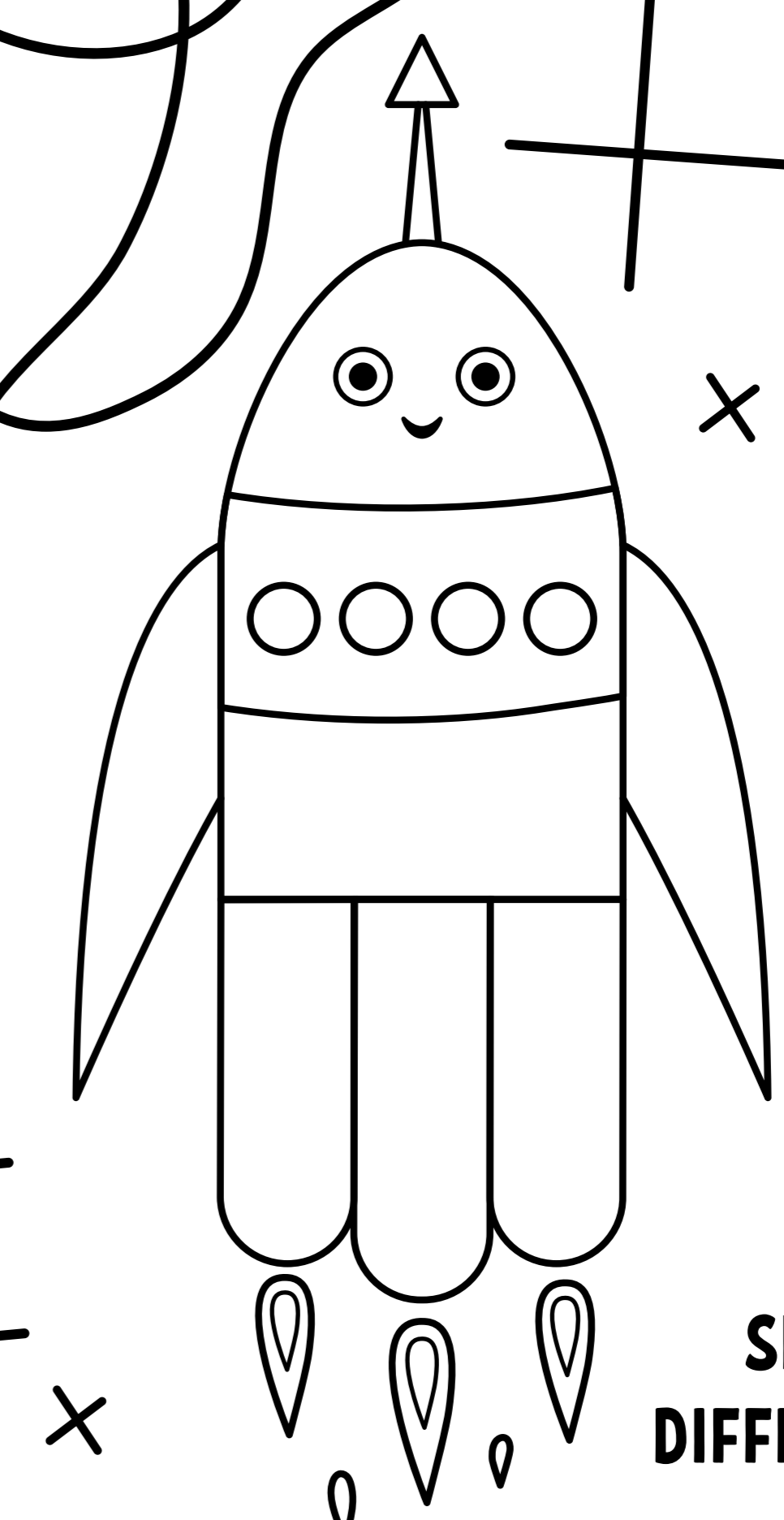
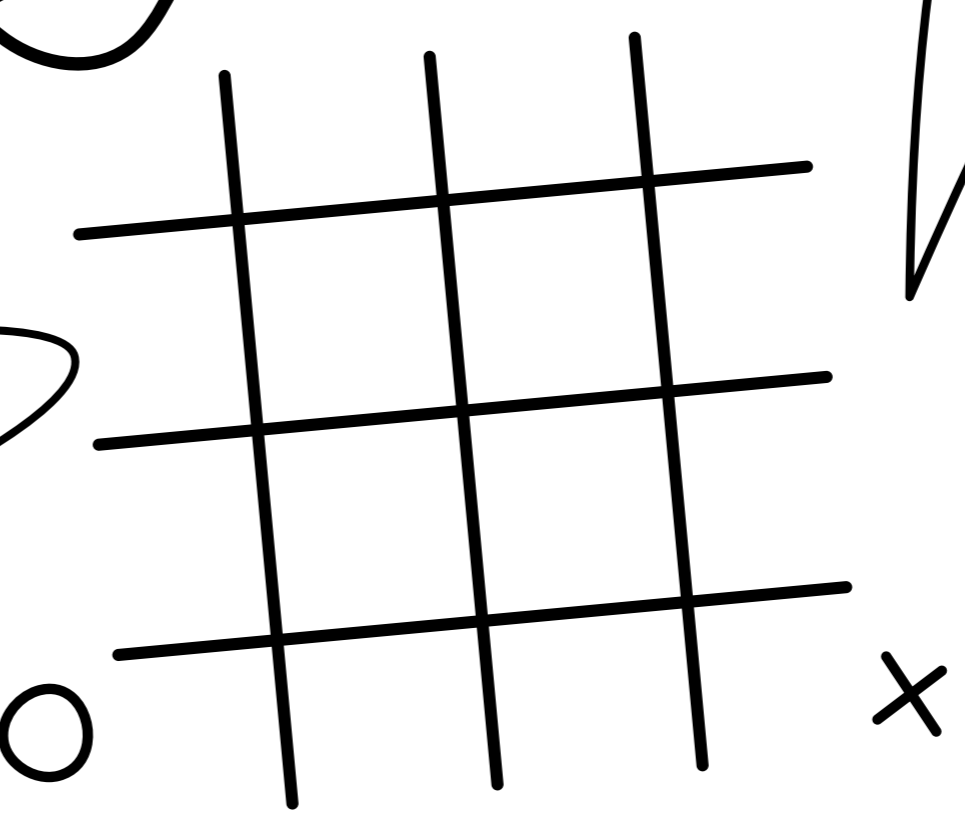
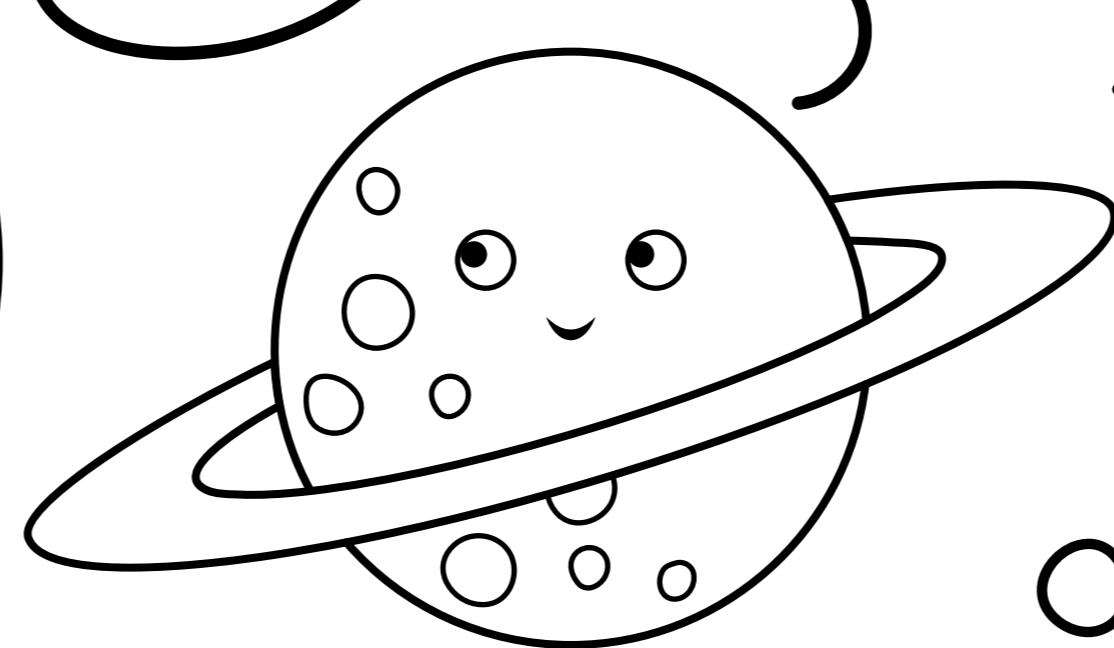
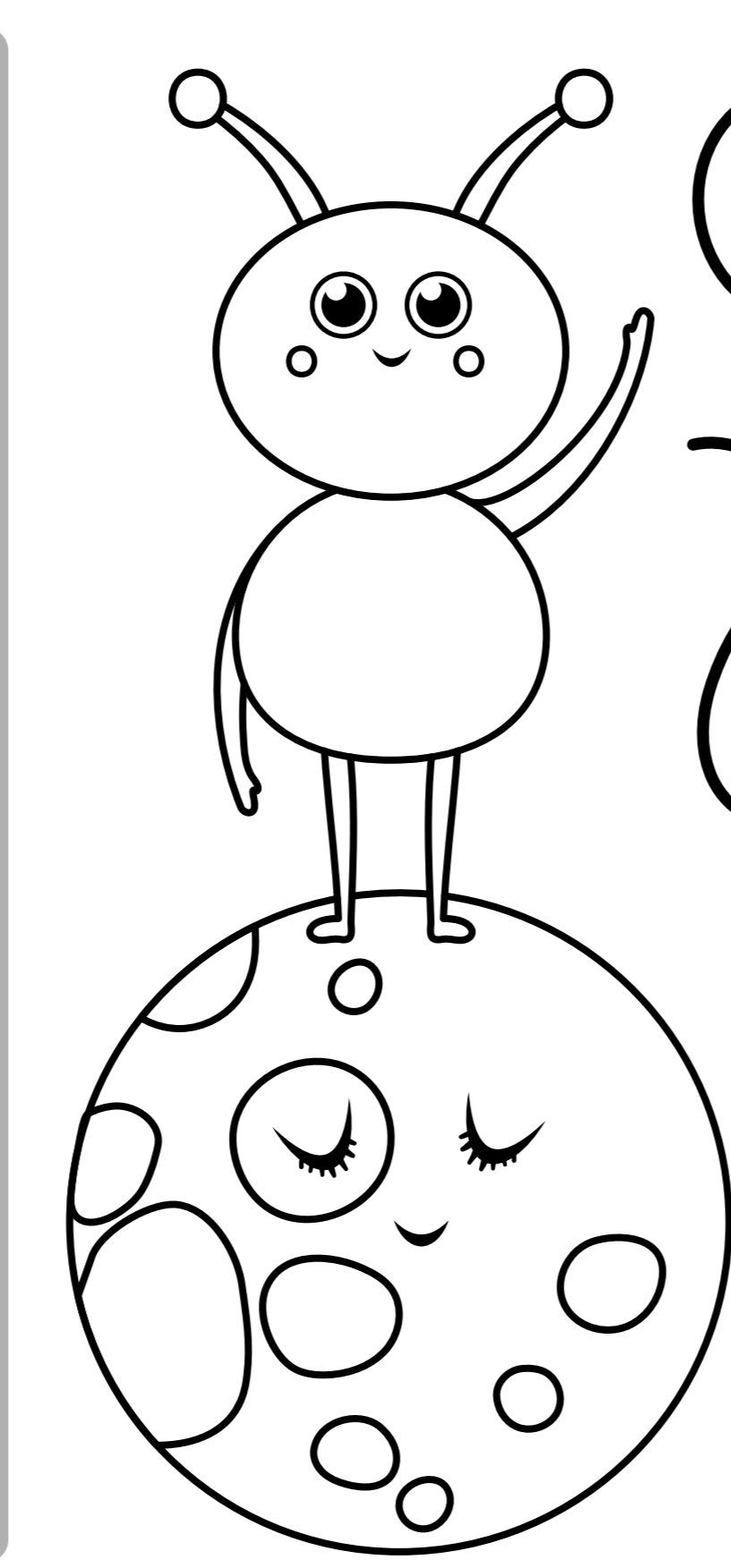
WORDSCRAMBLE

NAUTASTRO _____
NETLAP _____
KETCOR _____

Find objects
in the puzzle
and discover
the hidden word

ASTRONAUT
SATELLITE
STAR
ALIEN
UFO
PLANET
ROCKET

A	S	T	U	S	★	R
S	S	R	P	F	A	O
T	A	O	N	P	O	C
A	T	E	A	L	A	K
R	C	L	U	T	N	E
A	★	L	I	T	E	T
L	I	E	N	E	T	E



SPOT 5
DIFFERENCES